

# ScanScope® FL System

Aperio's ScanScope FL addresses the growing demand for whole-slide scanning of slides stained with multiple fluorochromes. With the quad multi-bandpass filter set, up to four color channels can be acquired; however, users can add other filters for even greater flexibility. Advanced illumination, autoexposure, and autofocus capabilities eliminate the need for trial-and-error scanning, greatly reducing the problem of photobleaching.

The ScanScope FL system acquires high-resolution multi-color digital images that can be archived permanently, eliminating concerns about fading of the fluorochromes on the glass slides over time.

After scanning your slides, you can view the resulting multi-channel image in Aperio's ImageScope advanced visualization software. Dynamic fusion allows you to view all channels simultaneously, turn individual channels on and off as desired, or adjust the brightness, contrast, gamma, and registration for each channel independently.

## CREATE, VIEW, EDIT

- Rapidly load and scan with one-button operation
- Create digital slides in multiple formats
- View, edit, and annotate digital slides with our user-friendly ImageScope™ software

## MANAGE, ARCHIVE

- Manage digital slides, search data tables, and autopopulate fields with barcode data using Spectrum™ Plus, our web-based digital slide information management software

## UPGRADE OPTIONS

- Optional 1-TB server highly recommended for optimal performance



RNA *in situ* hybridization on mouse brain showing vasoactive intestinal peptide (VIP) expression in green (Alexa Fluor® 488) and somatostatin (Sst) expression in red (Alexa Fluor® 555). Nuclei are counterstained with DAPI.

Courtesy of Amy Bernard, Ph.D., Allen Institute for Brain Science.

# Specifications\*

## SLIDE LOADING

Five slides, automatic

## SPEED (15 x 15 MM; 3 CHANNELS)\*

<5 minutes/slide at 20x

(invitrogen Fluocells Slide #3, mouse kidney, 3 colors)

<15 minutes/slide at 20x

(typical customer slide, 3 colors)

\*Scan time will vary with size of the tissue, intensity of staining, and number of color channels.

## GLASS SLIDE DIMENSIONS

1 x 3" (25 x 75 mm) slides

2 x 3" (50 x 75 mm) slides

## OBJECTIVE

20x/0.75 Plan Apo

## SCANNING MAGNIFICATION

20x

40x (20x with 2x magnification changer)

## RESOLUTION

20x: 0.468 µm/pixel

40x: 0.234 µm/pixel

## CAMERA

8/10-bit monochrome TDI line-scanning camera

## LIGHT SOURCE

Mercury, PC-controlled, 2000+ hours

## FILTER CONFIGURATION

6-position motorized excitation filter wheel

6-position motorized filter cube turret

Quad multi-band filter set included  
(Pinkel configuration)

Other filter options available

## IMAGE COMPRESSION

JPG2000

## IMAGE FILE FORMAT

TIFF, SVS, and JP2 (using JPEG2000 compression)

## BARCODE SUPPORT

2-D: DataMatrix, QR Code

1-D: Interleaved Code 2 of 5, Code 39, Code 128

## DIMENSIONS (W x D x H)

12.5 x 19 x 20.5" (318 x 465 x 502 mm)

## WEIGHT

55 lbs (25 kg)

## MONITOR

24" high-resolution LCD (1920 x 1200 pixels)

## POWER

AC 100-240, 50/60 Hz

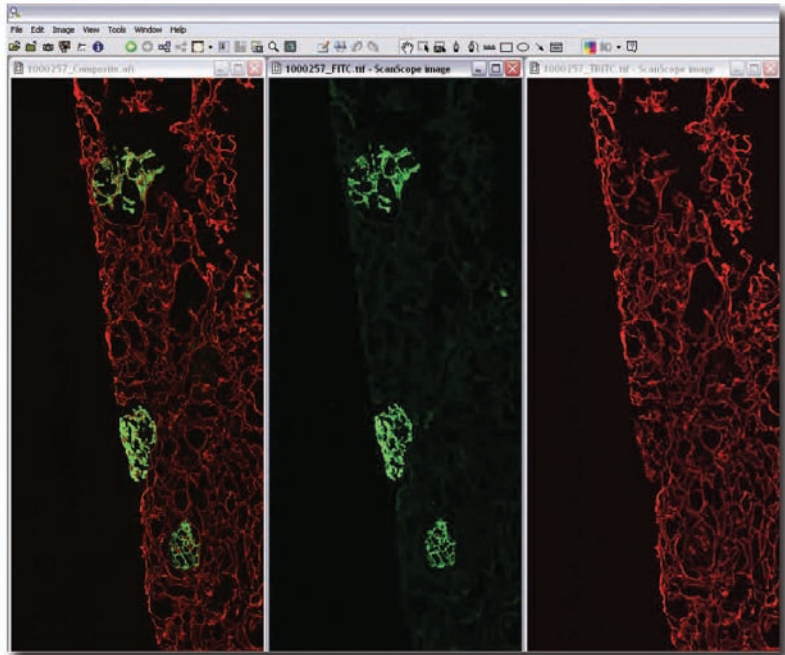
## COMPLIANCE

CE, FCC

## WARRANTY

12 Months

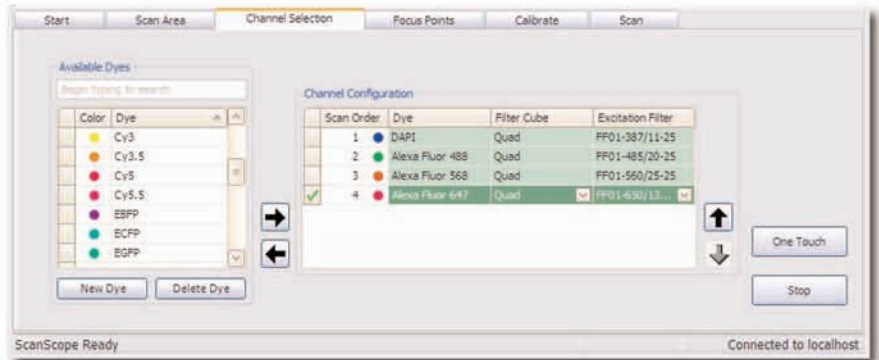
With Aperio's advanced visualization platform you can view multichannel images in a variety of ways.



Indirect immunofluorescence on a frozen section of a human renal biopsy with a diagnosis of Membranous GN showing Type IV collagen in red (Cy3) and Human IgG in green (FITC).

Courtesy of A. Bernard Collins, Massachusetts General Hospital and Harvard Medical School.

Aperio's easy-to-use interface will feel natural to fluorescence microscope users.



For more information or to get started, contact our Inside Sales department at [info@aperio.com](mailto:info@aperio.com) or 866.478.4111.

**HEADQUARTERS**  
Aperio  
1360 Park Center Drive  
Vista, CA 92081

Main: 866.478.4111  
Fax: 760.539.1116

[info@aperio.com](mailto:info@aperio.com)  
[support@aperio.com](mailto:support@aperio.com)  
[www.aperio.com](http://www.aperio.com)

**EUROPEAN OPERATION**  
Aperio  
3 The Sanctuary  
Eden Office Park  
Ham Green  
Bristol BS20 0DD, UK

Main: 011 44 1275 375 123  
Fax: 011 44 1275 373 501

[europa@aperio.com](mailto:europa@aperio.com)  
[europesupport@aperio.com](mailto:europesupport@aperio.com)  
[www.aperio.com](http://www.aperio.com)



Make Pathology Extraordinary

\*Specifications are subject to change without notice. For complete specifications, please contact your Aperio sales representative at 866-478-4111.

Aperio products are FDA cleared for specific clinical applications, and are intended for research use for other applications. For clearance updates, visit [www.aperio.com](http://www.aperio.com).